

EMV Installation - VX805

This instruction manual will guide you through enabling chip reader functionality with RTS. First, you will need to update your account information in RTS. This can be found in the Configure Retail Account section. Next, you will install the EMV Server, also executed on your server computer. Instructions are located in the Configure EMV Server section.

Your hardware will also need to be updated. Please see the VX805 Setup section.

System Requirements

Please contact Vantiv/Mercury Payment Systems for your Deployment ID number and to confirm your account is configured for **credit card transactions only. RTS does not handle debit transactions.**

To complete the instructions you will need the following:

- 1) VeriFone card readers installed on your workstations
- 2) Deployment ID supplied by MPS/Vantiv
- 3) All stations and your deposit must be closed for the day. You can verify your stations are closed by navigating to Reports - Stations - Open and Reports - Stations - Closed. If any stations, including Internet Ticking, are open, please close the stations and your deposit. Once you have verified your stations have closed, you may proceed with the installation.
- 4) Activation of chip readers can only occur when sales are not taking place. Please complete activation instructions outside of business hours to avoid any disruption of sales.

Getting Help

RTS Technical Support is available if you require any assistance during standard business hours Monday through Friday, 9 am - 10 pm EST.

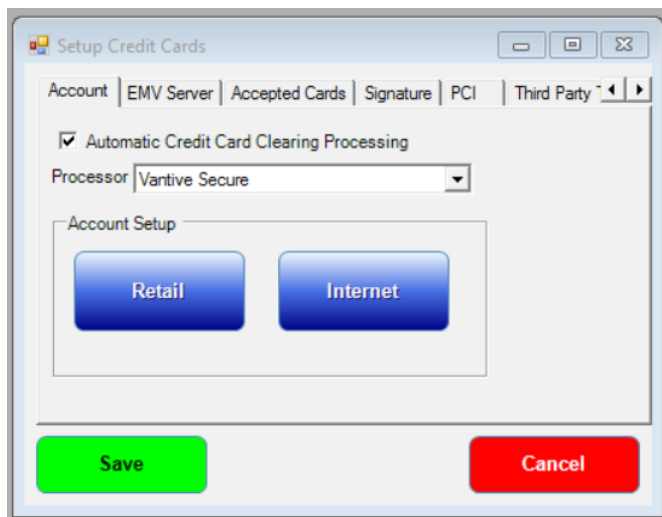
Ready Theatre Systems

(865) 212-9703 Ext.120

Configure Retail Account

** As mentioned on System Requirements, it is imperative to make sure all stations and the deposit are closed prior to initializing chip functionality. To verify all stations are closed, navigate to reports - stations open. You may also check Reports - Stations - Closed. If any Stations or Internet Ticketing are open, please close the stations and deposit accordingly.

1) Navigate to Setup - Credit Cards on the RTS Server. To confirm you are on the server computer, navigate to Help - About and verify the window displays "Server" and not "Workstation." Server will also display at the top of your RTS window.



2) Select "Retail"

3) Enter the RTS password logged into the system with the appropriate privileges.

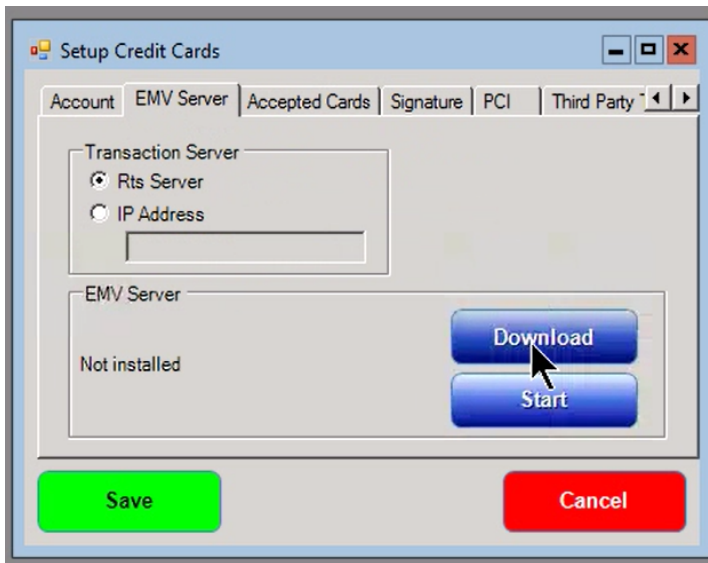
4) RTS will then prompt for your secure user name and password. The secure user name and password was previously used when closing out your credit card batch at the end of the night. If you do not have records of your secure login credentials, please contact your administrator. If you are not able to locate your secure user name and password, please contact RTS technical support during standard business hours Monday through Friday 9 am - 10 pm EST to reset credit cards.

5) Modify the Merchant ID (Terminal ID) number provided by MPS/Vantiv. Please make note of the previous Terminal ID number in case the ID needs to be set back to previous data. Press save.

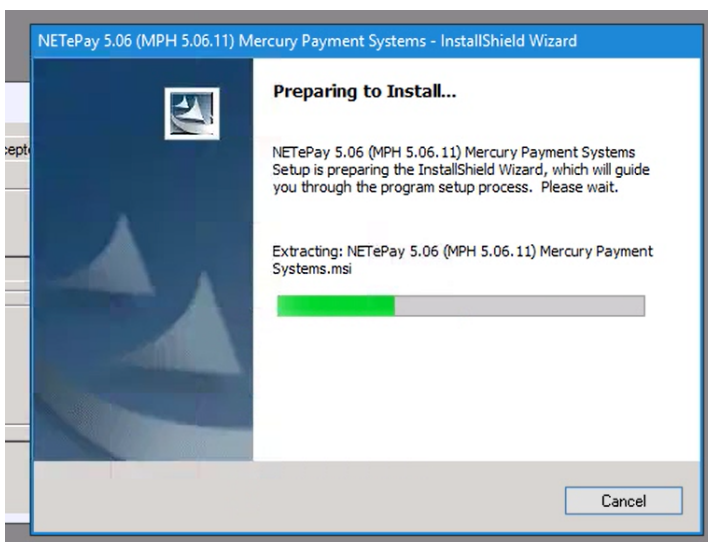
6) Enter RTS password followed by secure user name and password. If passwords are entered incorrectly, please repeat the above steps.

Configure EMV Server

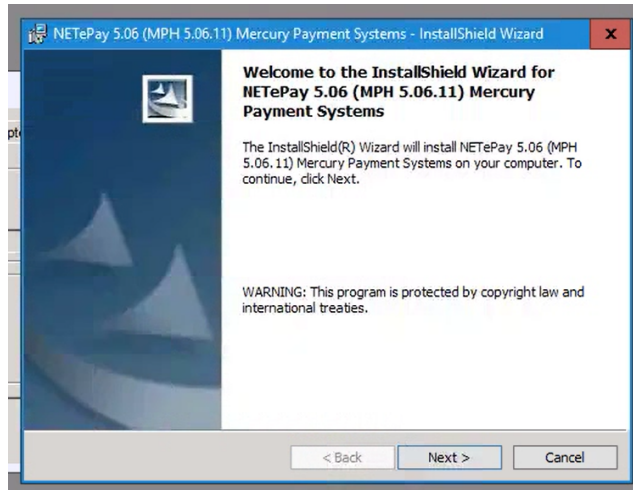
- 1) Navigate to Setup - Credit Card on the RTS Server. To confirm you are on the server computer, navigate to Help - About and verify the window displays "Server" and not "Workstation." Server will also display at the top of your RTS window.
- 2) Select the EMV Server Tab
- 3) Make sure that RTS Server is Marked
- 4) Click Download



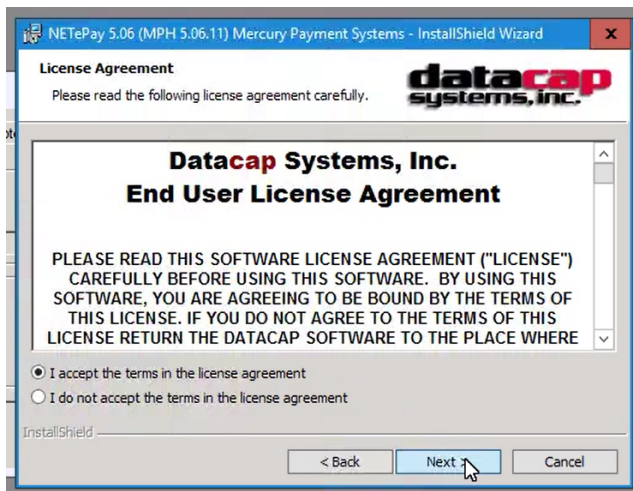
- 5) After the program downloads, it will begin the installation program as pictured below.



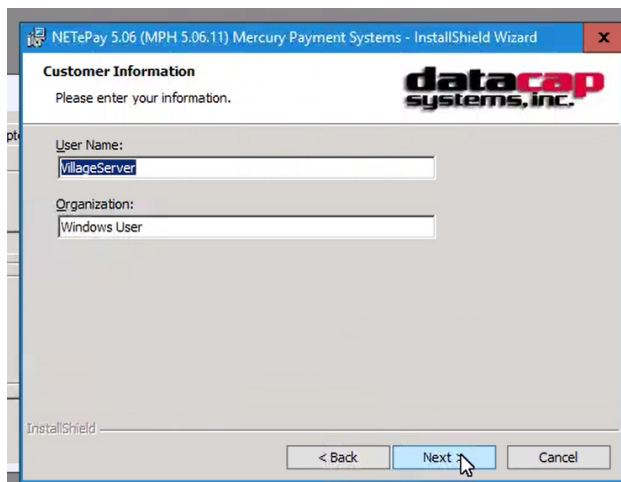
6) Click Next



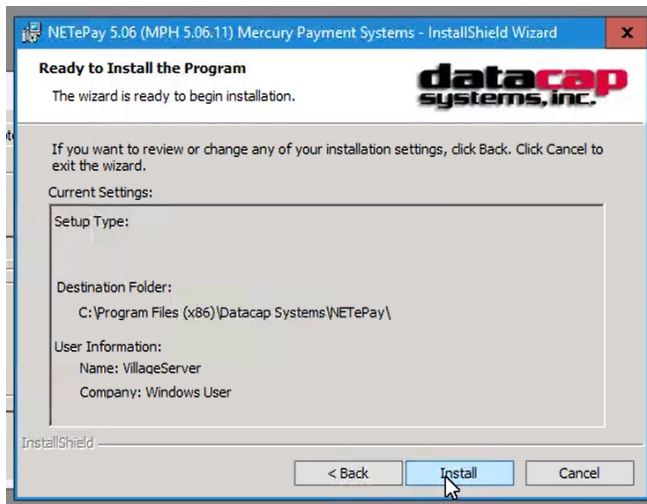
7) Change the agreement to "I accept" and click Next.



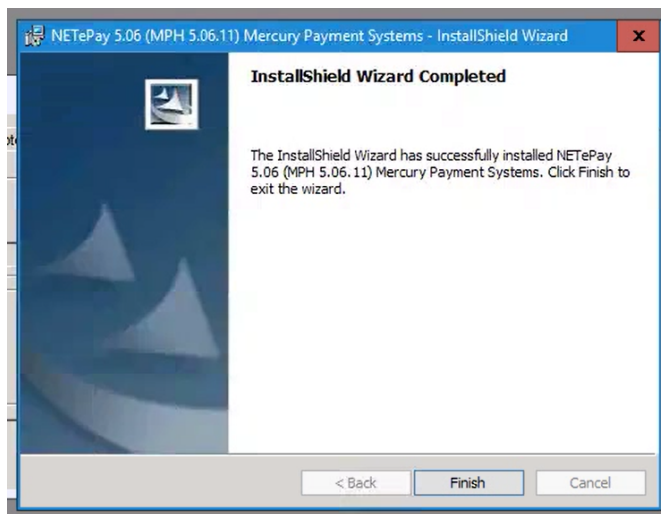
8) Leave the information as provided and click next.



9) Click Install



10) Click Finish

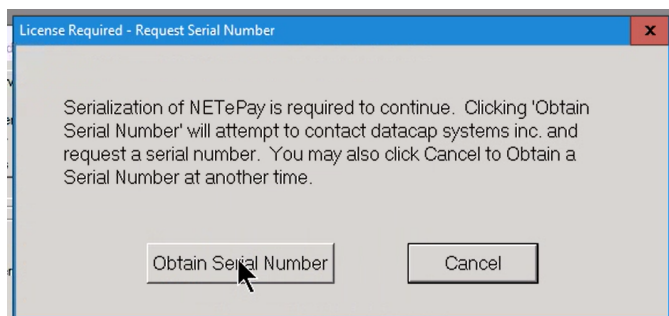


11) Restart computer when prompted.

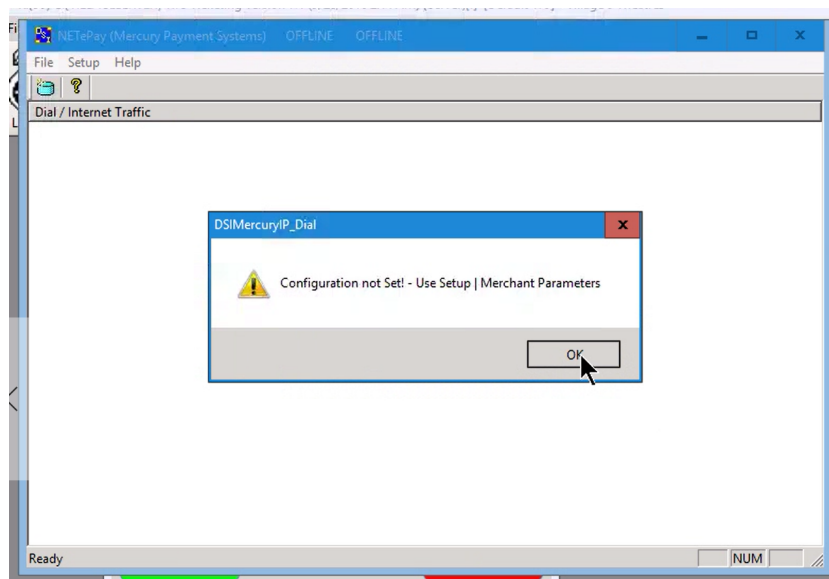
12) After computer has restarted, return to the EMV Server tab by navigating to Setup - Credit Cards

13) Press Start

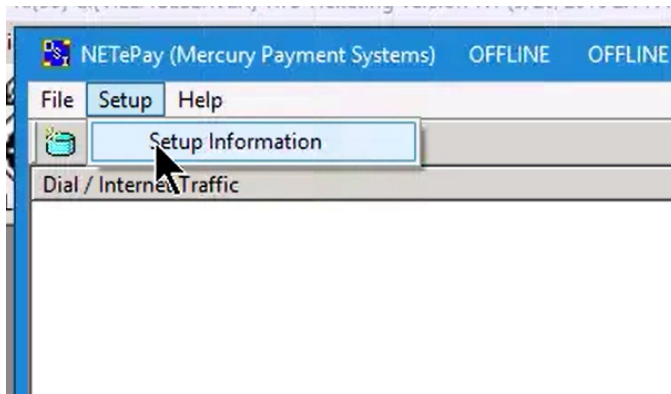
14) A message will prompt. Select "Obtain Serial Number"



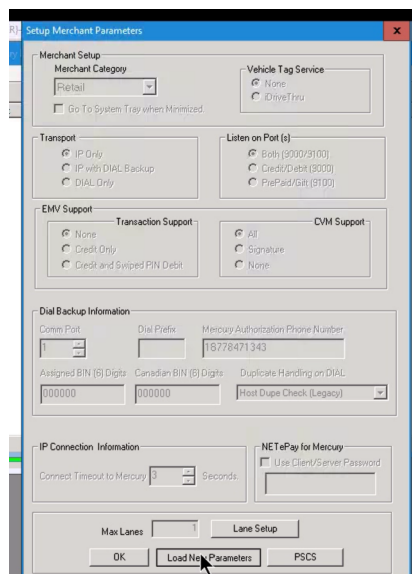
15) The application will then locate the serial number. The program will then open.



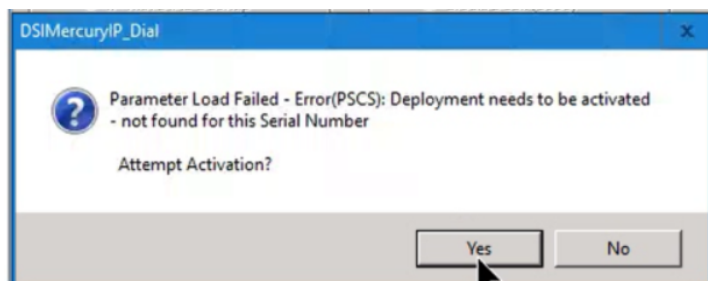
16) Navigate to Setup - Setup Information



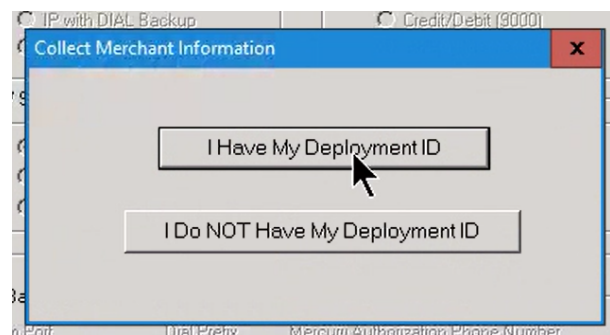
17) The Setup Merchant Parameters Window will prompt. Select "Load New Parameters"



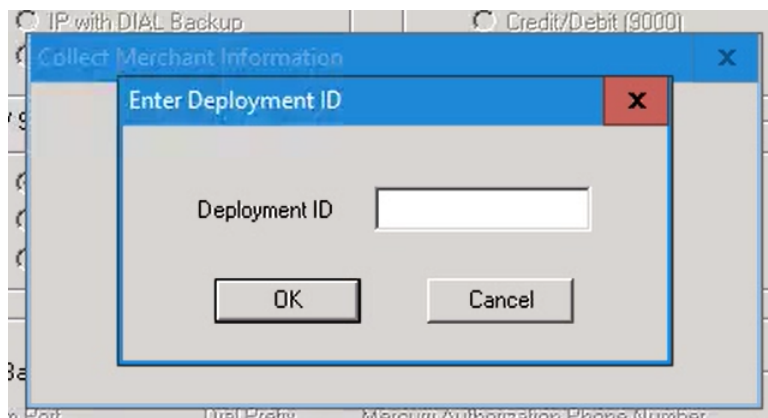
18) The following message will appear. Click Yes



19) Select "I have my Deployment ID"



20) Enter Deployment ID number supplied by Vantiv/MPS



21) After you have entered your deployment ID, a screen will appear verifying your information. Upon verification, please select "Yes, this is the Correct Merchant"

Setup Merchant Parameters

Merchant Setup

Merchant Category: Retail

Go To System Tray when Minimized: ☐

Vehicle Tag Service: ☒ None ☐ iDriveThru

Transport

☒ IP Only ☐ IP with DIAL Backup ☐ DIAL Only

Listen on Port (s)

☒ Both (9000/9100) ☐ Credit/Debit (9000) ☐ PrePaid/Gift (9100)

EMV Support

☒ None ☐ Credit D ☐ Credit a

Attempting Activation via PSCS...

Please Wait . . .

Dial Backup Information

Comm Port: 1

Dial Prefix:

Mercury Authorization Phone Number: 18778471343

Assigned BIN (6) Digi: 000000

Canadian BIN (6) Digits: 000000

Duplicate Handling on DIAL: Host Dupe Check (Legacy)

IP Connection Information

Connect Timeout to Mercury: 3 Seconds

NETePay for Mercury

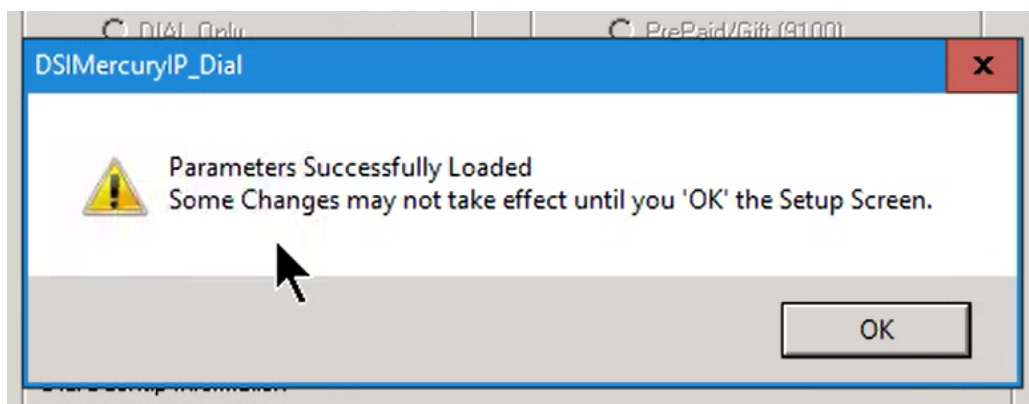
Use Client/Server Password: ☐

Max Lanes: 1

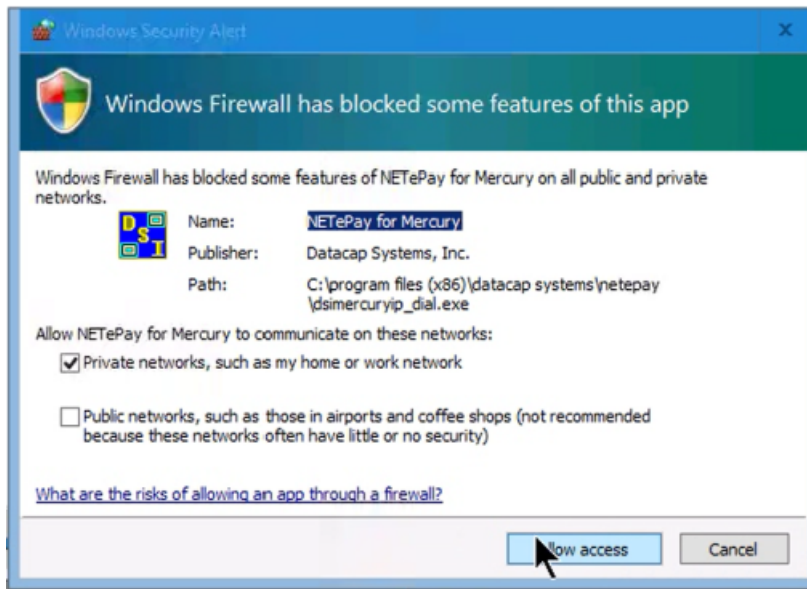
Lane Setup

OK Load New Parameters PSCS

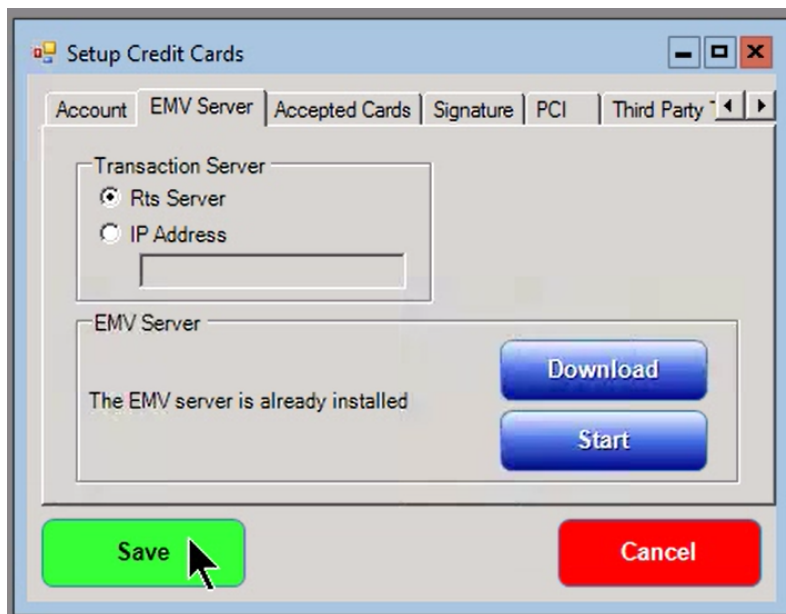
22) After activation you will see the following prompt. Select "Ok"



23) Click Ok Again. On the Windows Firewall screen please select "Allow Access"



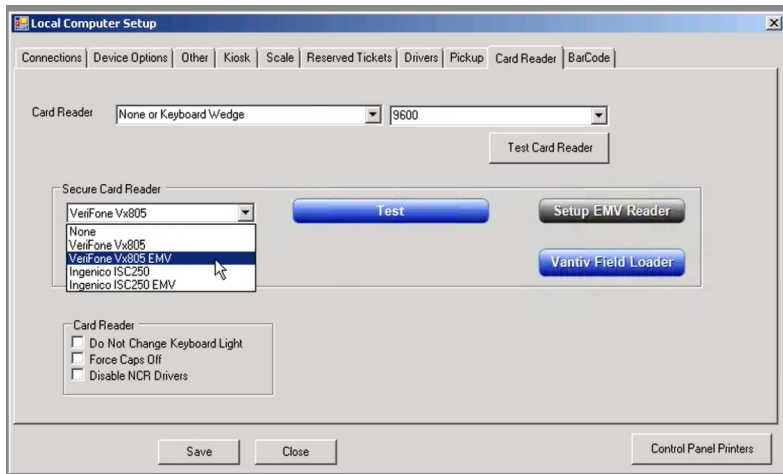
24) Exit the setup. Click Save on the Credit Card Setup window.



VX805 Setup

1) On each selling station with a card reader, navigate to Setup - Local Computer. Choose the Card Reader Tab.

2) Change your card reader type to VeriFone Vx805 EMV



3) Click Setup EMV Reader. The button will change to Initializing EMV Reader.



4) You will see the follow message if successfully initialized.

